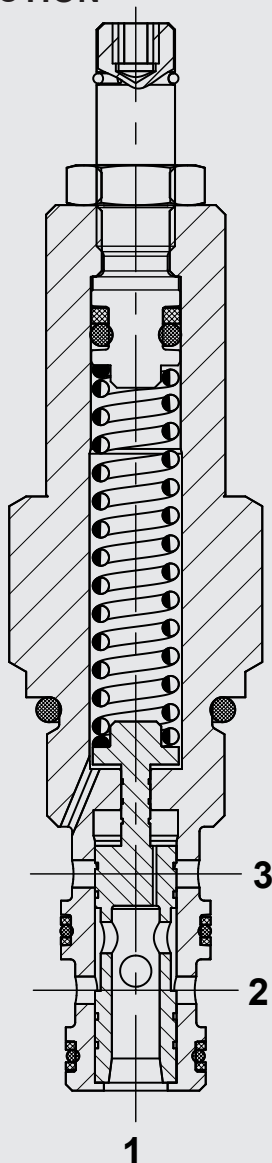


up to 15 l/min
up to 350 bar

FUNCTION



The DR06 allows bidirectional flow between port 2 to port 1 with the spring chamber drained through port 3. Once the pressure setting is reached at Port 1, the spool shifts to restrict the flow at port 2, thereby regulating pressure at port 1. If pressure at port 1 exceeds the setting of the valve, the spool will shift further and relieve excess pressure through port 3. Any pressure at port 3 is directly additive to valve pressure setting.

Pressure reducing / relieving valve spool type, direct-acting UNF Cartridge – 350 bar DR06-01

ADVANTAGES

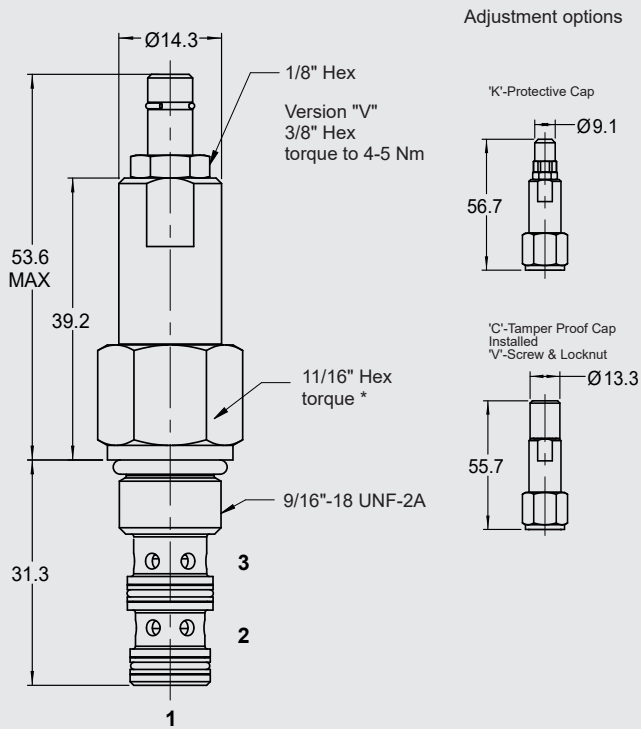
- Various spring ranges up to 241 bar
- Positive stop prevents spring from over adjustment (option V)
- Adjustable under full pressure
- Stroke limiting device for enhanced safety
- Hardened internal components to ensure minimal wear and extended service life
- Exposed surfaces zinc-nickel plated for increased corrosion protection (1000 hr Salt spray test)

SPECIFICATIONS*

Operating pressure:	max. 350 bar
Nominal flow:	max. 15 l/min
Pressure range:	5 to 14 bar 12 to 34 bar 21 to 69 bar 51 to 138 bar 73 to 241 bar
Leakage (port 3):	< 90 ml/min. at 207 bar
Media operating temperature range:	NBR: min. -30 °C to max. +100 °C FKM: min. -20 °C to max. +120 °C
Ambient temperature range:	NBR: min. -30 °C to max. +120 °C FKM: min. -20 °C to max. +120 °C
Operating fluid:	Hydraulic oil to DIN 51524 Part 1, 2 and 3
Viscosity range:	min. 7.4 mm ² /s to max. 420 mm ² /s
Filtration:	Class 21/19/16 according to ISO 4406 or cleaner
Installation:	No orientation restrictions
MTTF _a :	150 - 1200 years, according to DIN EN ISO 13849-1
Material:	Valve body: steel Spool: hardened and ground steel Seals: NBR (standard) FKM (optional) Back-up rings: solid thermoplastic polyester
Cavity:	FC06-3
Weight:	0.15 kg

* see "Conditions and instructions for valves" in brochure 53.000

DIMENSIONS



* Torque:
Steel manifold
(ultimate tensile strength < 360 N/mm²): 16-20 Nm
Aluminium manifold
(ultimate tensile strength < 330 N/mm²): 16-20 Nm
(tool acc.to DIN EN 6789, tool type II class A or B)
For further information see brochure No.53.000
"Conditions and instructions for valves"

millimeter
subject to technical modifications

MODEL CODE

DR06-01 - C - N - 050 V 050

Basic model

Pressure reducing / relieving valve, UNF

Body and ports*

C = cartridge only
SB2 = G1/4 ports, steel body
AB2 = G1/4 ports, aluminium body
AS4 = SAE-4 ports, aluminium body
SS4 = SAE-4 ports, steel body

Seals

N = NBR (standard)
V = FKM

Pressure range

020 = 75 to 200 PSI (14 bar)
050 = 170 to 500 PSI (34 bar)
100 = 300 to 1000 PSI (69 bar)
200 = 740 to 2000 PSI (138 bar)
350 = 1200 to 3500 PSI (241 bar)

Type of adjustment

C = tamper proof cap factory installed
(must specify setting below)
V = hollow hex
K = protective cap

Setting pressure

No details = no setting, spring relaxed
050 = customized setting (desired PSI/10)

Standard models

Model code	Part No.
DR06-01-C-V-020V	2610602
DR06-01-C-N-050V	2610571
DR06-01-C-N-100V	2610603
DR06-01-C-N-200V	2610301
DR06-01-C-N-350V	2610570

Other models on request

*Standard in-line bodies

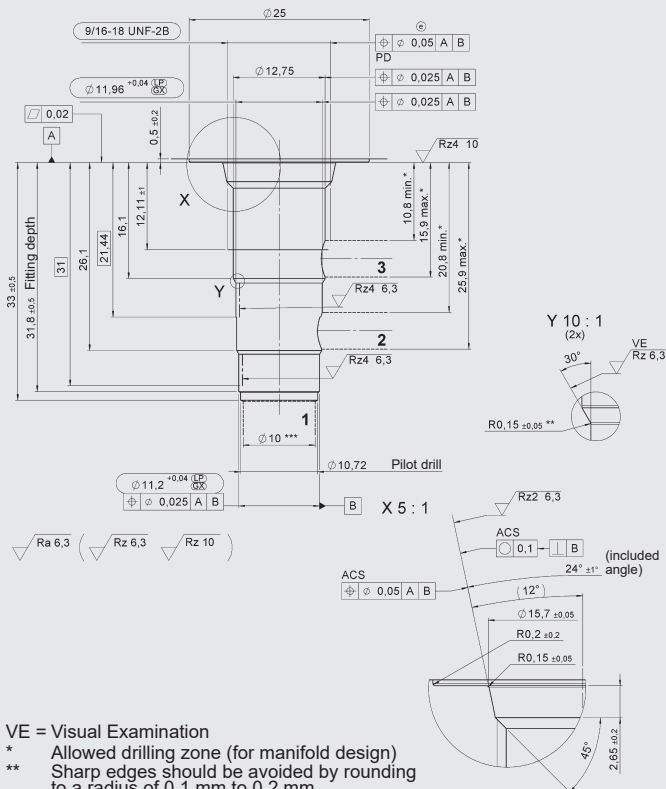
Code	Material	Ports	Pressure	Part No.
FH063-SB2	Steel, plated	G1/4"	350 bar	3740562
FH063-AB2	Aluminium, anodized	G1/4"	210 bar	3741286
FH063-AS4	Aluminium	SAE-4	210 bar	2600492
FH063-SS4	Steel	SAE-4	350 bar	2600493

Seal kits

Code	Material	Part No.
FS063-N	NBR	2610186
FS063-V	FKM	2610187

CAVITY

FC06-3



VE = Visual Examination

* Allowed drilling zone (for manifold design)
** Sharp edges should be avoided by rounding to a radius of 0.1 mm to 0.2 mm
*** largest pre-drilling diameter (nominal tool diameter)

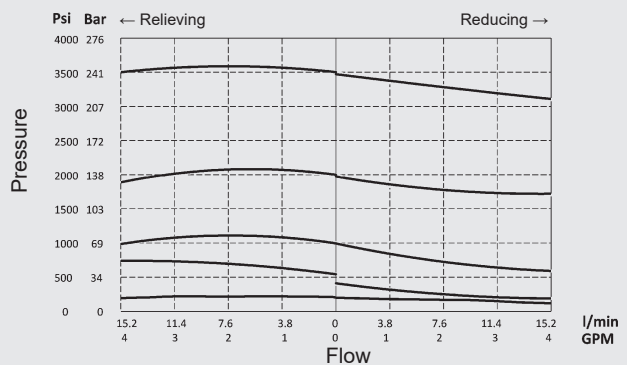
Form tools

Tool	Part No.
Rougher	2582050
Finisher	2582051

millimeter
subject to technical modifications

TYPICAL PERFORMANCE

Measured at $v = 34 \text{ mm}^2/\text{s}$, $T_{oil} = 38 \text{ }^\circ\text{C}$



NOTE

The information in this brochure relates to the operating conditions and applications described. For applications or operating conditions not described, please contact the relevant technical department. Subject to technical modifications.

HYDAC Fluidtechnik GmbH
Justus-von-Liebig-Str.
D-66280 Sulzbach/Saar
Tel: 0 68 97 /509-01
Fax: 0 68 97 /509-598
E-Mail: valves@hydac.com