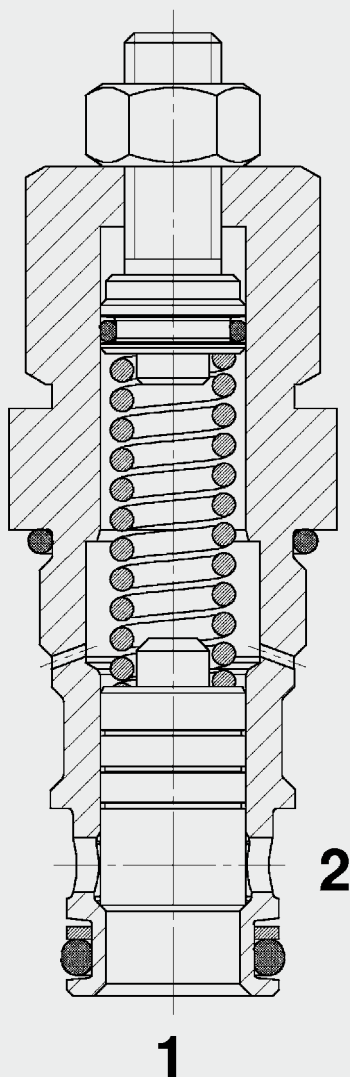


60 l/min
48 bar

FUNCTION



The pressure relief valve DB10120A-13X is a direct-acting, spring-loaded poppet valve. If the hydraulic pressure is below the pre-set spring tension, the valve is closed. If the hydraulic pressure exceeds the pre-set spring tension, the valve opens and the oil can flow to tank via port 2

Pressure Relief Valve Poppet Type, Direct Acting Metric Cartridge – 48 bar DB10120A-13X

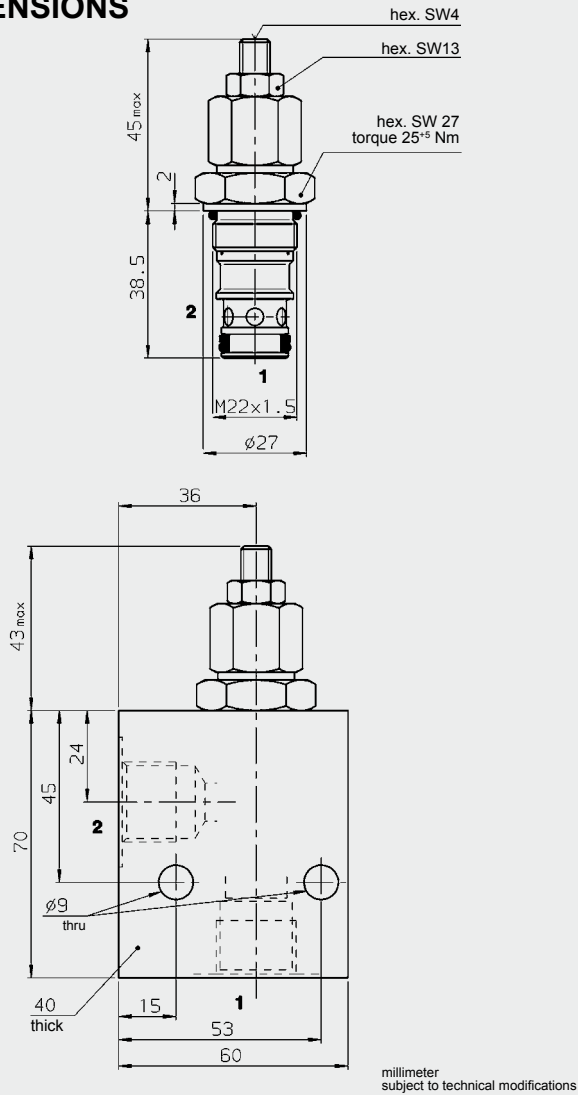
FEATURES

- Characteristics designed for low pressure applications up to max. 50 bar
- Excellent stability throughout the entire flow range
- External surfaces zinc-plated and corrosion-proof
- Hardened and ground valve components to ensure minimal wear and extended service life
- Adjustable throughout flow range
- Various pressure ranges up to 48 bar

SPECIFICATIONS

Operating pressure:	0 to max. 48 bar, adjustable	
Nominal flow:	max. 60 l/min	
Operating pressure:	up to 11 bar up to 29 bar up to 34 bar up to 48 bar	
Media operating temperature range:	min. -20 °C to max. +120 °C	
Ambient temperature range:	min. -20 °C to max. +120 °C	
Operating fluid:	Hydraulic oil to DIN 51524 Part 1 and 2	
Viscosity range	min. 2.8 mm ² /s to max. 380 mm ² /s	
Filtration:	Class 21/19/16 according to ISO 4406 or cleaner	
MTTF _d :	150 years (see "Conditions and instructions for valves" in brochure 5.300)	
Installation:	No orientation restrictions	
Material:	Valve body:	high tensile steel
	Poppet:	hardened and ground steel
	Seals:	FKM (standard) NBR (optional, media temperature range -30 °C to +100 °C)
	Back-up rings:	PTFE
Cavity:	10120A	
Weight:	0.13 kg	

DIMENSIONS



MODEL CODE

DB 10120A - 13 X - 11 V 11

Basic model _____
Pressure relief valve, metric

Cavity _____
according to ISO

Type _____
13 = direct-acting, zinc-plated

Series _____
(determined by manufacturer)

Operating pressure ranges _____
11 = 0 to 11 bar
29 = 0 to 29 bar
34 = 0 to 34 bar
48 = 0 to 48 bar

Type of adjustment _____
V = adjustable using tool
Other types of adjustment on request

Opening pressure setting _____
No details = No setting, spring relaxed
Other settings on request

Standard models

Model code	Part No.
DB10120A-13X-11V	3028008
DB10120A-13X-29V	3028007
DB10120A-13X-34V	560992
DB10120A-13X-48V	561942
Other models on request	

Standard in-line bodies

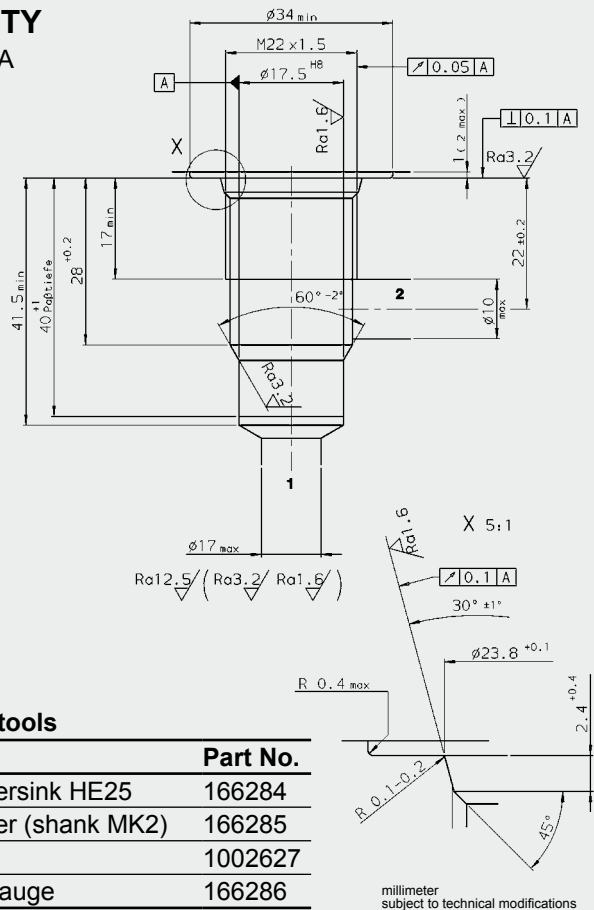
Code	Part No.	Material	Ports
R10120A-01X-01	395232	Steel, zinc-plated	G1/2
R10120A-01X-02	395233	Steel, zinc-plated	M 22 x 1.5

Seal kits

Code	Material	Part No.
DB10120A... NBR	NBR	3085499
DN10120A... FKM	FKM	560222

CAVITY

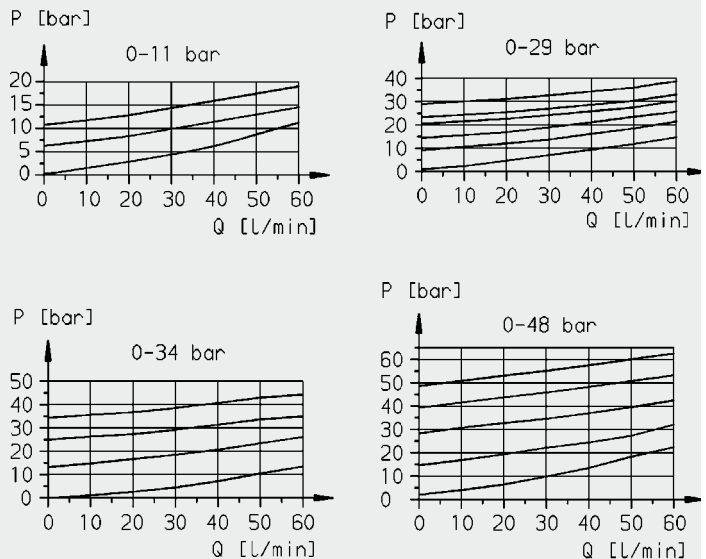
10120A



Form tools

Tool	Part No.
Countersink HE25	166284
Reamer (shank MK2)	166285
Tap	1002627
Plug gauge	166286

PERFORMANCE



Note

The information in this brochure relates to the operating conditions and applications described. For applications or operating conditions not described, please contact the relevant technical department. Subject to technical modifications.

HYDAC Fluidtechnik GmbH
Justus-von-Liebig-Str.
D-66280 Sulzbach/Saar
Tel: 0 68 97 /509-01
Fax: 0 68 97 /509-598
E-Mail: flutec@hydac.com